

# ULTRA FIRMING SKIN CARE



**Dermatologist Formulated**

FOR ALL SKIN TYPES

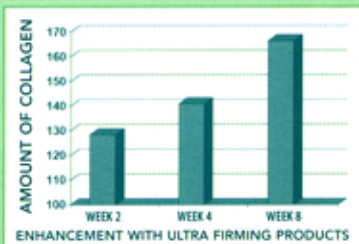
**Ultra Firming Marine**  
*Collagen Boosting Antioxidant*

**Ultra Firming Neck and Chest**  
*Lifting Enhancement Cream*

**Ultra Firming Eye**  
*Anti-Puff Formula*

Ultra Firming Products:

- Boost Collagen Production
- Firm and Smooth Skin
- Improve Skin's Health and Texture
- Impart Youthful Radiance



**YOUR PATH TO BEAUTIFUL SKIN**

## ULTRA FIRMING SKIN CARE

Combines advanced antioxidants like Indian Gooseberry Extract, Hawaiian Algae Peptides and innovative firming and hydrating ingredients in superior delivery systems, producing dramatic results in the texture and appearance of your skin.

### *For Your Face*

#### **Ultra Firming Marine**

Rejuvenate and firm your skin with this unique antioxidant formula that boosts your skin's immune system, improving skin tone, fine lines and wrinkles.

#### **Key Ingredients:**

**Indian Gooseberry Extract:** Firms and tightens your skin and contains the highest natural concentration of antioxidant Vitamin C.

**Glycolic:** Derived from sugar cane to gently exfoliate the skin, revealing new, healthier skin.

**Hawaiian Algae Peptides:** Derived from the sea, this state-of-the-art ingredient is very hydrating and helps skin replenish collagen.

### *For Your Neck And Chest*

#### **Ultra Firming Neck And Chest**

Lift and enhance your neck and décolleté with this antioxidant botanical emulsion with advanced hydrating ingredients and Evening Primrose Extract to firm crepey skin, improve elasticity, and smooth skin's texture.

#### **Key Ingredients:**

**Marine Algae Extract:** Quickly firms your skin and provides long-term anti-aging effects by protecting the skin cells from oxidative stress, strengthens collagen and elastin fibers.

**Lactic Acid:** pH adjusted formula, gently exfoliates your skin without irritation.

**Ceramides:** Replenishes skin's lipid barrier, helping skin maintain moisture level by decreasing transepidermal water loss.

**Botanical Peptide:** Strengthens elastin fibers, helps protect against free radical damage and improves moisture.

**Evening Primrose Extract:** Softens and helps protect your skin by boosting its ability to retain moisture.

### *For Your Eyes*

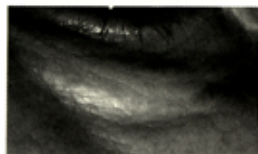
#### **Ultra Firming Eye**

Firm and tighten your eye area with this silky firming lotion. The unique blend of active botanicals helps minimize the appearance of puffy eyes and dark circles, dramatically reducing the effects of stress and age.

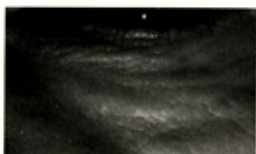
#### **Key Ingredients:**

**Active Peptides:** Firm your eye area and help improve the look of puffiness and dark circles.

**Marine Algae Extract:** Quickly firms your skin and provides long-term anti-aging effects by protecting the skin cells from oxidative stress, strengthens collagen and elastin fibers.



PUFFY EYE BEFORE



PUFFY EYE AFTER 8 WEEKS